

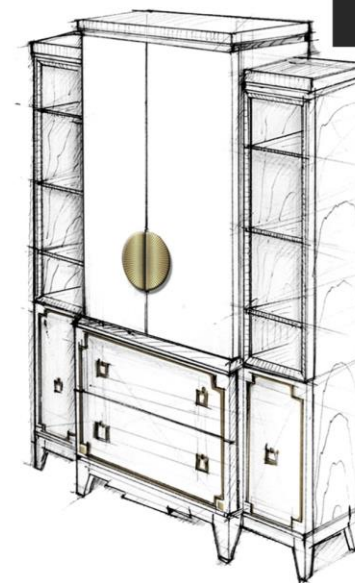
THOUSAND *lines*



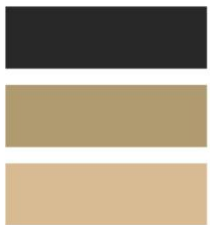
Thousand lines takes its cue from the Deco style, seen and reinterpreted towards the Salda image. From the research and the passion for technical experimentation, a new capsule collection is born, composed of materials of great value.



On the one hand makassar and bois norci, rare and valuable essences, and on the other hand maple, a more delicate material of unchanging beauty. A decorative ebonistic element is the "millerighe", a woodworking technique that creates wavy grooves on the surface, then lacquered. The gilded bronzes, strictly in Deco style, embellish the collection. On the one hand we find the rigor of the millerighe pattern, on the other hand the makassar creates a striped optical effect that reinterprets all the brown tones that vary according to the light and its reflections. Salda has signed the capsule collection combining makassar, maple and bois noirci, with one of the typical finishes of the Atelier: shellac.



the collection



color scheme



Art. TL-01

Vitrine Deco, with brass elements and thousand lines motif.
2 doors and sides in glass. Back in maple and internal shelves in
maple and bois noirci profiles.

Cm 116x44x165

Wood: beech and bois noirci
Finishing: GL NERO and golden details
Brass: golden brass



wooden texture

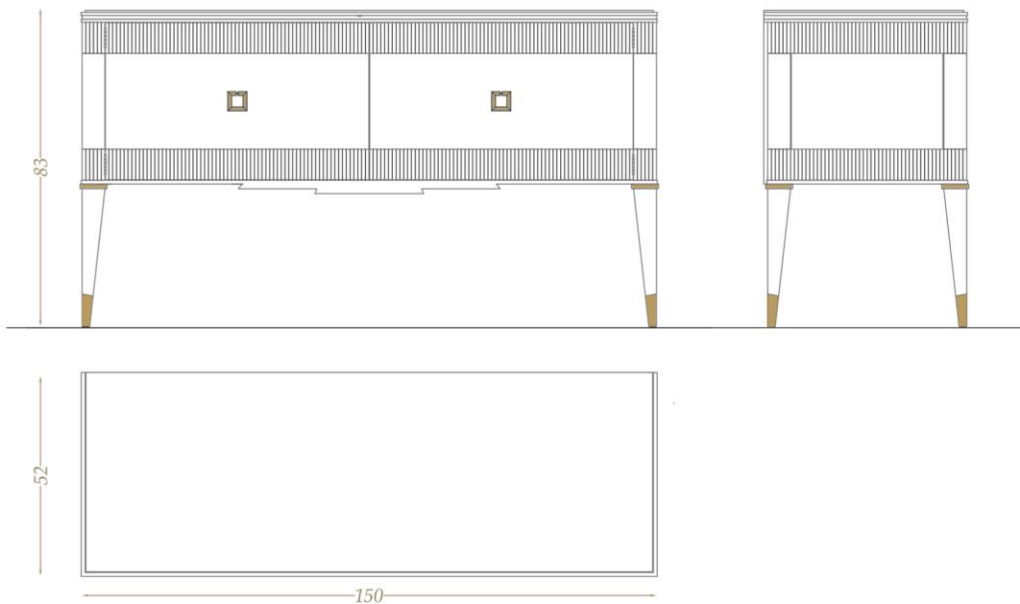
golden brass

maple texture





color scheme



Art. TL-02

Sideboard Deco, with brass elements and thousand lines motif.
Back in maple and internal shelves in maple and bois noir profiles.
Marble top.

Cm 150x48x83

Wood: beech and maple (inside)

Finishing: GL NERO

Brass: golden brass

Marble: Bianco Carrara



marble texture



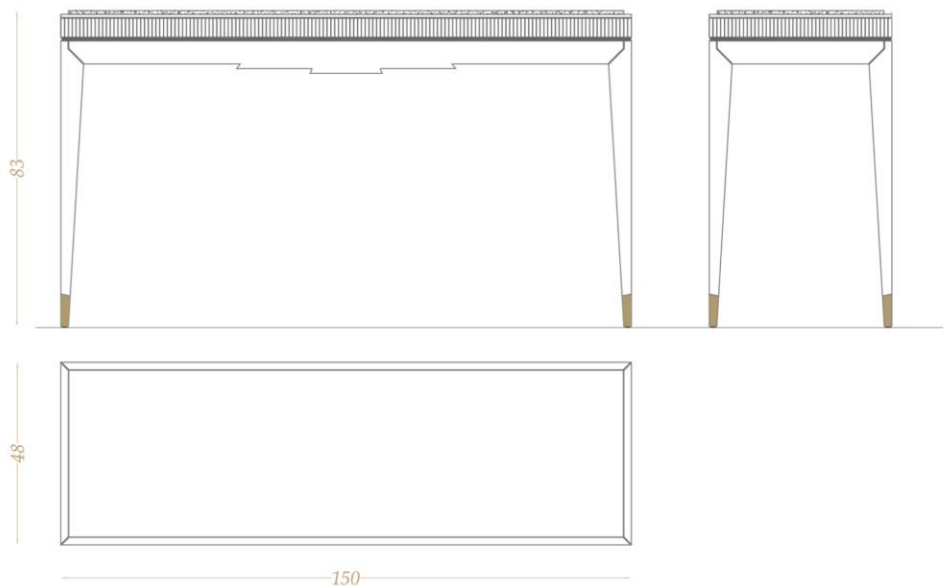
wooden texture

maple texture





color scheme



Art. TL-03

Console Deco, with brass elements and thousand lines motif.
Marble top.

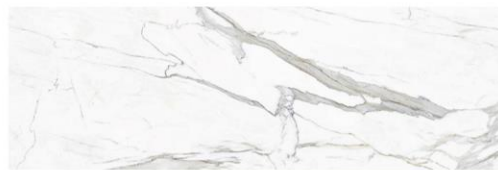
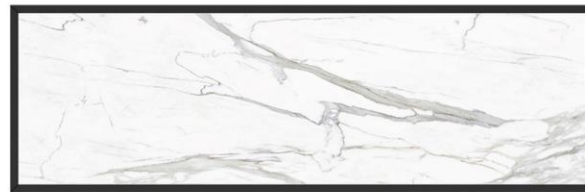
Cm 150x48x83

Wood: beech

Finishing: GL NERO

Brass: golden brass

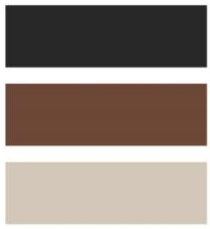
Marble: Bianco Carrara



marble texture



wooden texture



color scheme



Art. TL-04

Oval looking-glass, vertical or horizontal, with clear mirror.

Cm 44x88

Wood: makassar and maple

Finishing: makassar wax polished and maple profiles



maple texture



clear glass

makassar texture





color scheme

Art. TL-05

Oval looking-glass, divided in 3 parts, the lateral with opening system and hand decorated on back. Clear mirror.

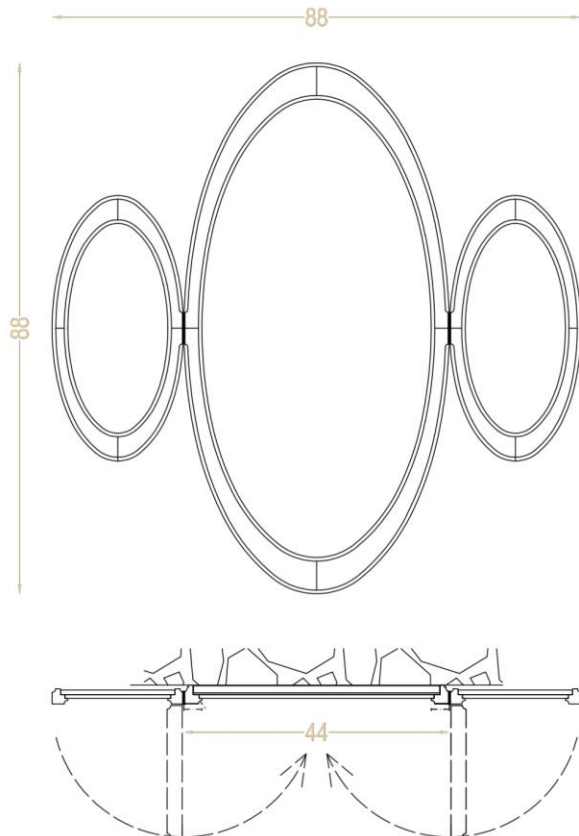
Cm 44x88 (close)

Cm 88x88 (open)

Wood: makassar and maple

Finishing: makassar wax polished and maple profiles.

Decorated part lacquered GL BLU with gold leaf decorations



maple texture

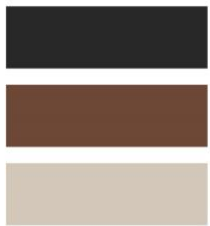


makassar texture

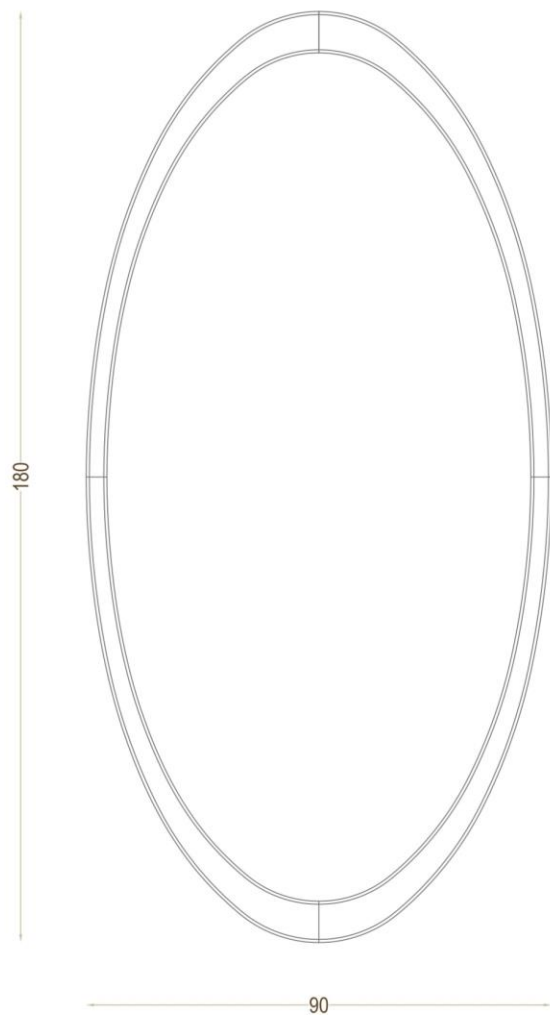


*polished
golden leaf decoration*

clear glass



color scheme



Art. TL-06

Vertical oval looking-glass, with clear mirror.

Cm 90x180

Wood: makassar and maple
Finishing: makassar wax polished and maple profiles



maple texture



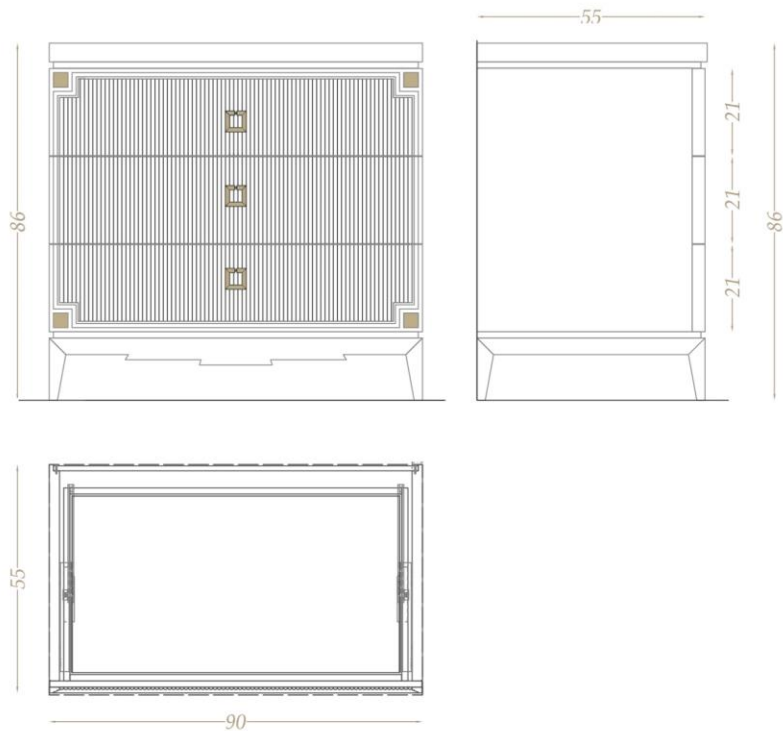
clear glass

makassar texture





color scheme



Art. TL-07

Chest of drawers Deco, 3 drawers with thousand lines motif, on metal guides. Brass details, wooden top.

Cm 90x55x86

Wood: beech and inside drawers in maple
Finishing: GL NERO and golden details
Brass: golden brass



maple texture



wooden texture

handle in brass





color scheme

Art. TL-08

Bed with upholstered headboard and wooden frame

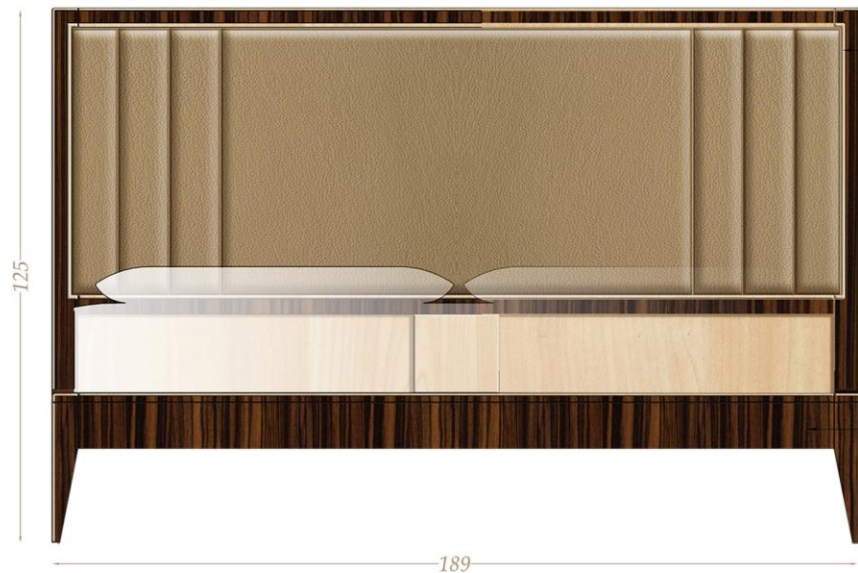
Cm 189x209x125

Slate cm 180x200

Wood: makassar and maple

Finishing: makassar wax polished and maple profiles

Fabric: D-T20014-8



maple texture



makassar texture

fabric





Art. 8682
Looking-glass,
clear grinded mirror.

Cm 82x81



Art. 8696
Console-table Deco, 1 drawer, brass
finishings, marble top. Shaped legs.

Cm 150x45x82



Mix & Match

Art. TL-01
Vitrine Deco, with brass elements and thousand
lines motif. 2 doors and sides in glass. Back in
maple and internal shelves in maple and bois
noirci profiles.

Cm 116x44x165



Art. 8583
Oval small table Louis XVI, 1
drawer, 2 lateral trays, 1 shelf,
wooden top with brass profile.

Cm 60x46x68



Art. 8665
Bergère inspired from the beginning of XX century style, with
hand-made carvings, traditionally upholstered, fixed back and
seat cushions with insert.

Cm 78x90x89



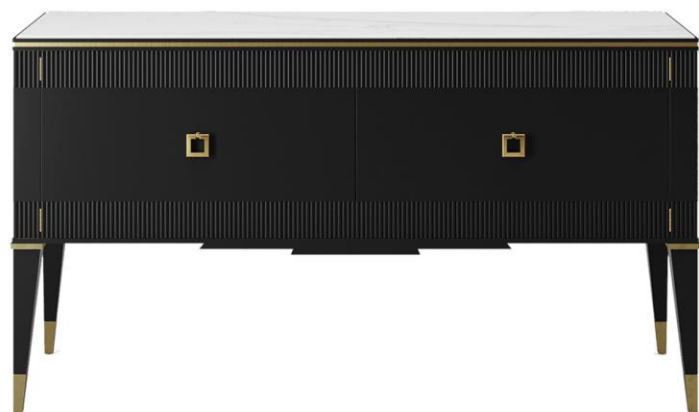


Art. TL-04
Oval looking-glass, vertical or horizontal, with clear mirror.

Cm 44x88



Mix & Match



Art. TL-02
Sideboard Deco, with brass elements and thousand lines motif. Back in maple and internal shelves in maple and bois noirci profiles. Marble top.

Cm 150x48x83

ART. FU 08 ARMCHAIR

Armchair for table in oak, fixed upholstered, back with button.

Cm 69x66x78



Art. DW-table

Table with inlay on top and on the beam, 4 legs, fixed.

Cm 240x130x75



Art. TL-06

Vertical oval looking-glass, with clear mirror.

Cm 90x180



Decorative pouf

Art. TL-08

Bed with upholstered headboard and wooden frame

Cm 189x209x125

Slate cm 180x200

Art. TL-07

Chest of drawers Deco, 3 drawers with thousand lines motif, on metal guides. Brass details, wooden top.

Cm 90x55x86



Art. TL-05

Oval looking-glass, divided in 3 parts, the lateral with opening system and hand decorated on back. Clear mirror.

Cm 44x88 (close)

Cm 88x88 (open)



Art. 8448

Armchair Louis XVI with upholstered seat

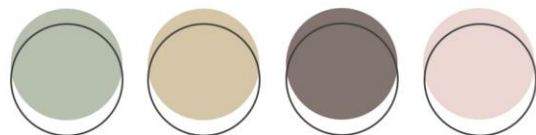
Cm 64x62x100



Art. 8073

Writing-desk demi lune Louis XVI. 5 drawers (1 with lock), 2 trays and leather top.

Cm 130x65x77

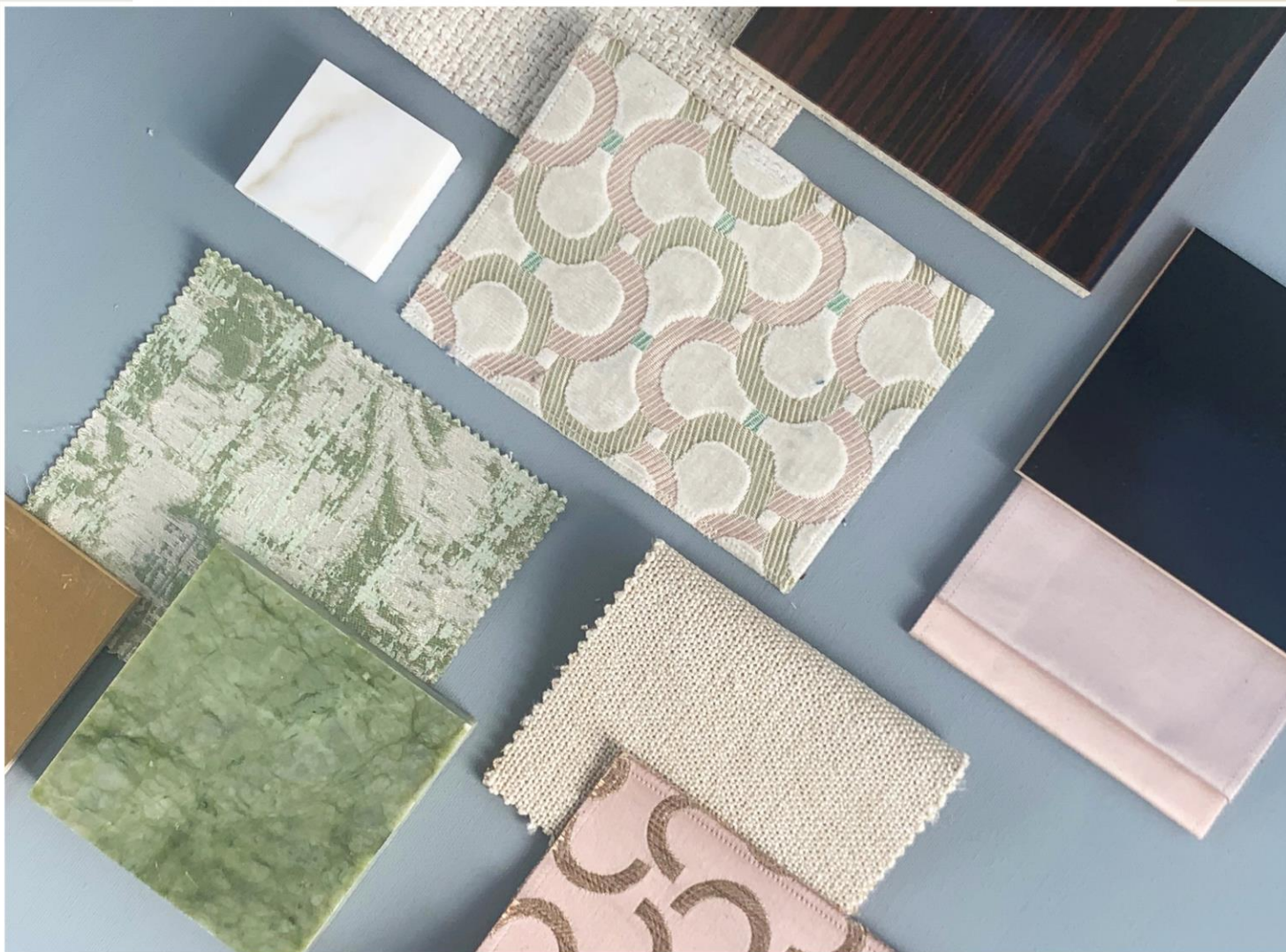


Mix & Match

ash grey



tea
green



desert sand

silver pink



pink
ground

Art Deco is therefore the source of inspiration for the collection, it is an artistic current characterized by classic and symmetrical shapes, clear geometries, an energetic and elegant style with attention to detail for a public with a great desire for luxury!

SALDA Arredamenti S.r.l.
Via Einaudi, 31 20821 Meda (MB) Italia
saldaarredamenti.com



saldaarredamenti



salda1870



@saldaarredamenti