



SALDA

1870

ELLIPTICAL LUXURY

*The latest jewel
of Salda's
cabinet-making*



Art. 8679 - Dining Table



RARE AND PRECIOUS MATERIALS





MAKASSAR: STAR OF AN ELEGANT CREATION

Modern elliptical shapes inspired by the mid 20th century meet the elegance and rarity of Makassar, one of the world's most prized materials, to bring forth an article of unique elegance and craftsmanship.

Its columnar stand is in costly hardwood and its top and base enriched with hand-crafted pieces of hardwood by Italy's most highly skilled inlay artists.

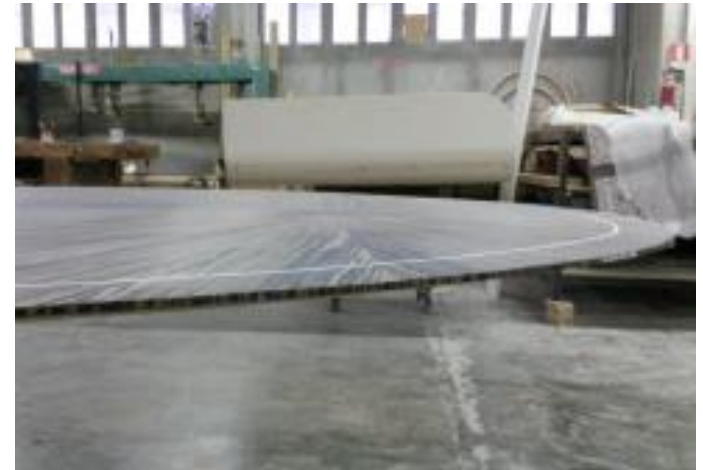
ONLY NOBLE WOODS OF PRIME QUALITY



Pillar in hardwood.

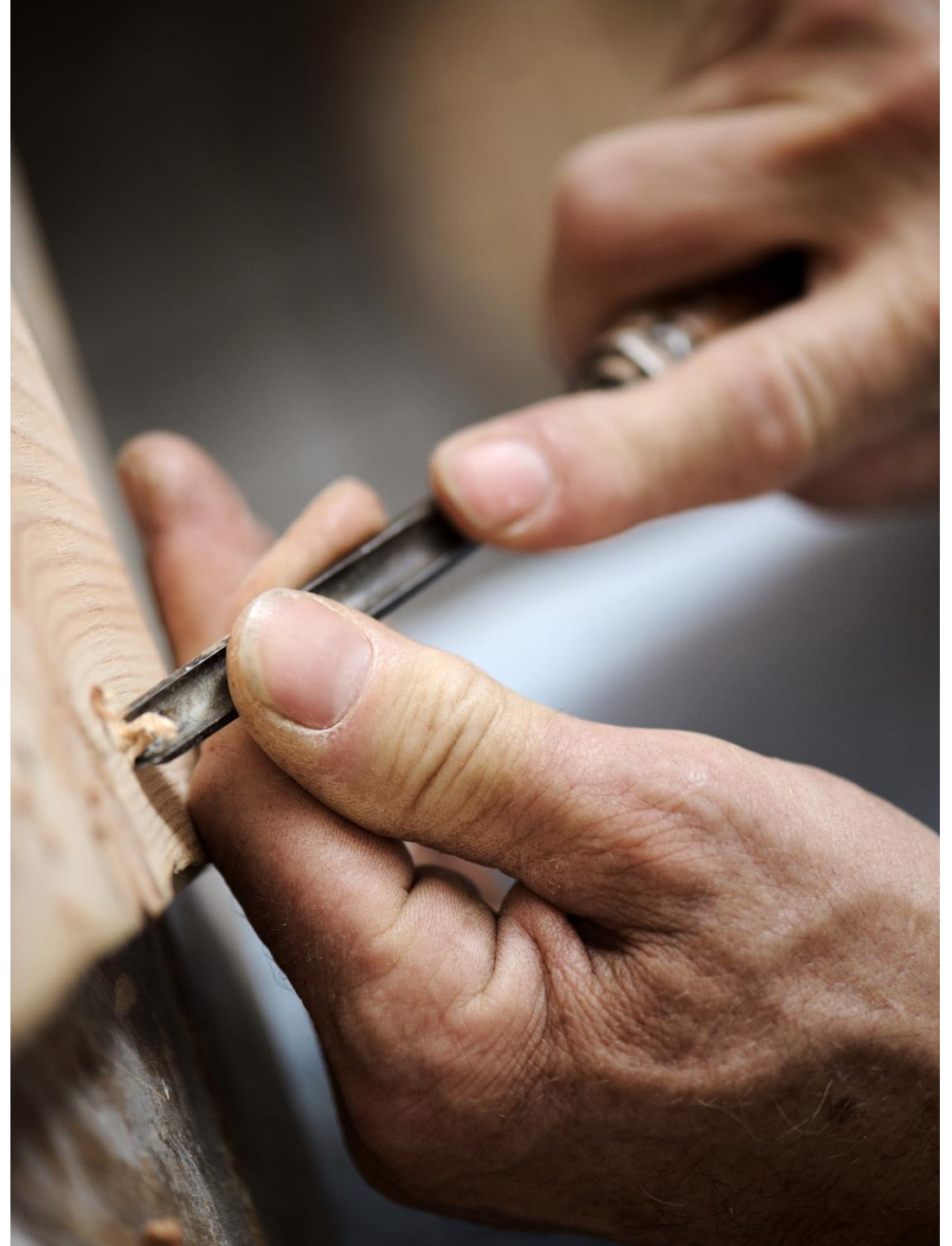


Makassar wood on the
top and base.



Maple tracery around the
top.

PRIZED CRAFTSMANSHIP





MASTERY OF MATERIALS AND ATTENTION TO DETAIL

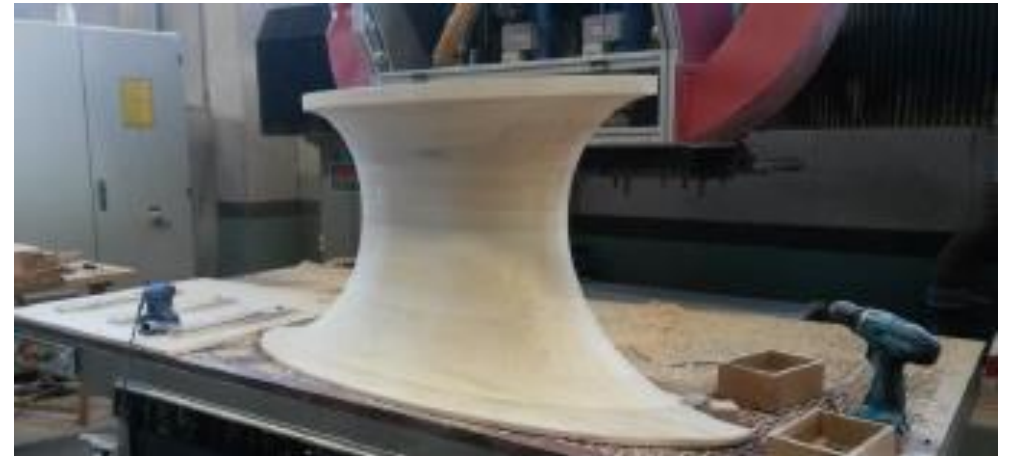
More than a table – a supreme craft achievement, requiring more than a month's work and the skills of seven different craftsmen: cabinet-maker, joiner, inlay artist, blacksmith, polisher, lacquer-worker and varnisher all take their turn, devoting their skills and dedication to the various stages until the piece takes its final form.

THE PILLAR

1. The central body of this piece has been created by assembling and gluing a number of solid wooden blocks to make a cuboid which is then planed into shape.

2. Because of its size and the need to leave an inner air chamber, the pillar is made in two parts and then covered with fabric and glue to make sure the solid wood does not move in any way.

3. The pillar is then covered with a layer of fine plaster and smoothed down, ready for the liquid-metal finish.





TOP AND BASE

The top and base of this table are among the finest achievements of the Brianza woodworker's craft.

Veneered with strips of Makassar wood showing a variety of veinings, hand-fitted and jointed together, each of these two parts shows a highly refined geometrical pattern which plays on the wood's different colours to create lighter and darker rays like those of a star.

The veneer of the base requires particular care and attention as it has to follow the elliptical and inclined outline of the piece.



The elegant top in Makassar wood is strengthened and steadied by a special iron T-piece wrought and fitted manually by our blacksmiths.



EXCLUSIVE AND SOPHISTICATED STYLE





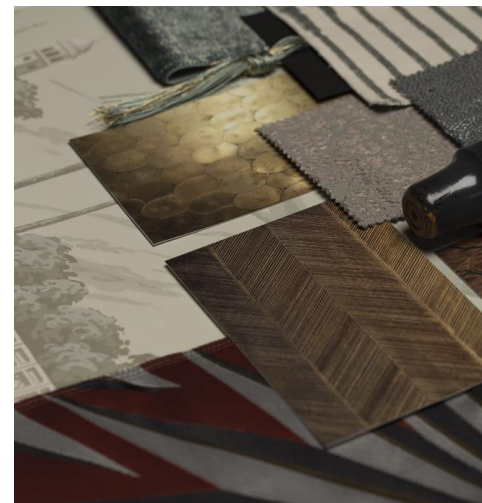
A CLASSIC REINTERPRETED

The design of this piece takes its inspiration from **an original model dating from 1950**: the firm still keeps the scale model prototype.

Now reinterpreted as a luxurious modern piece, this model mixes the oval shapes of the 1950s with today's metallic colours and geometrical motifs emphasized by the natural light and dark veining of Makassar wood.

A marriage of **tradition and modernity** that makes the piece unique and suitable for surroundings of many different styles and a wide range of tastes.

The on-trend geometrical motifs and metallic colours inspire the inlaid decoration of the table top and the finish of the pillar in waxed liquid bronze lacquer.



TECHNICAL SPECIFICATION

Art. 8679

1950s-style oval table, rigid.

WOOD: top + base in Makassar wood, pillar in metallic lacquer finish

SIZE: 290 x 155 x 77cm

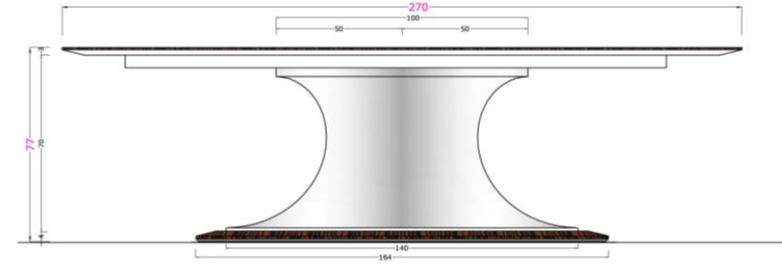
FINISHING: polished, with pillar in bronze metallic finish



CUSTOM VERSIONS

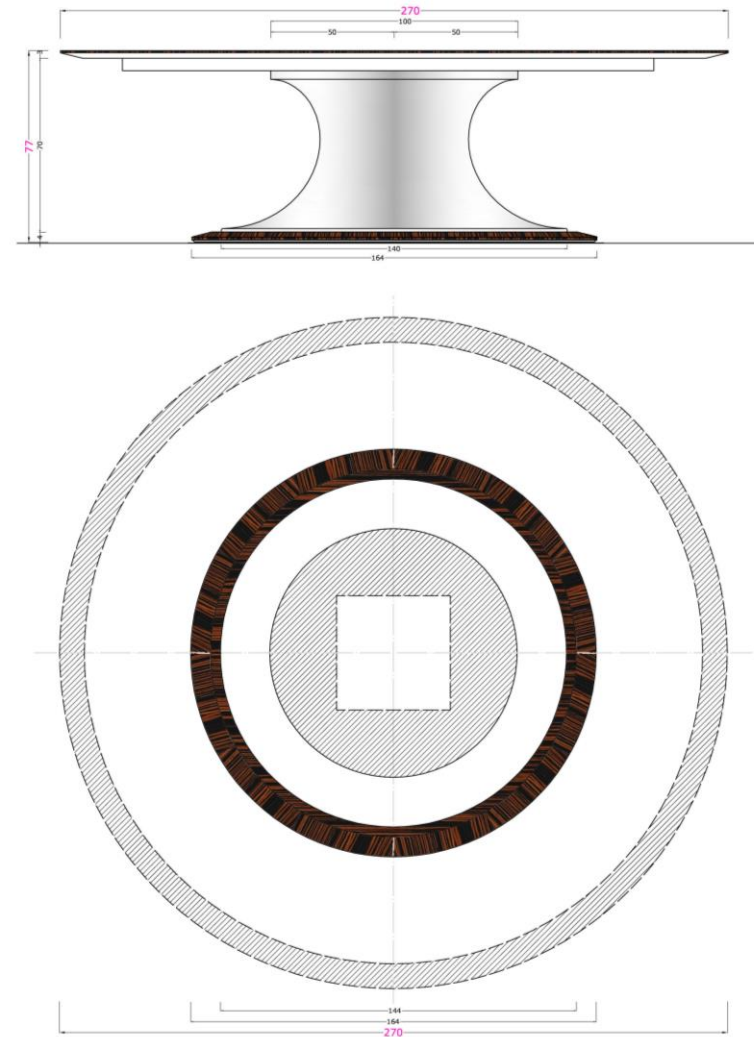
Art. 8679 – Mod.A

*Round top inlaid with star motif.
Circular base and pillar.*



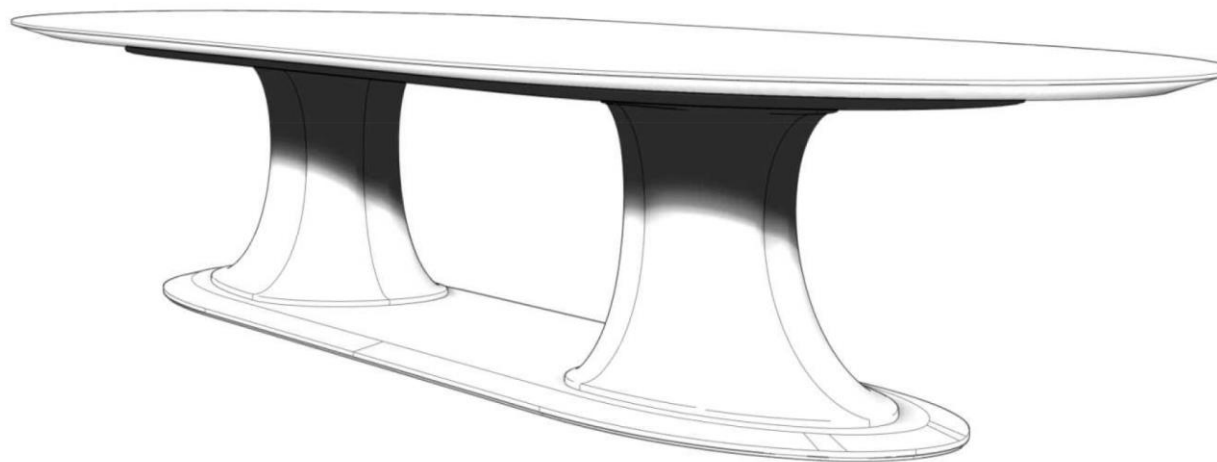
Art. 8679 Mod B

Version with round top and base. Decorated with hand-crafted pieces of Makassar ebony wood following the circular line of the top.

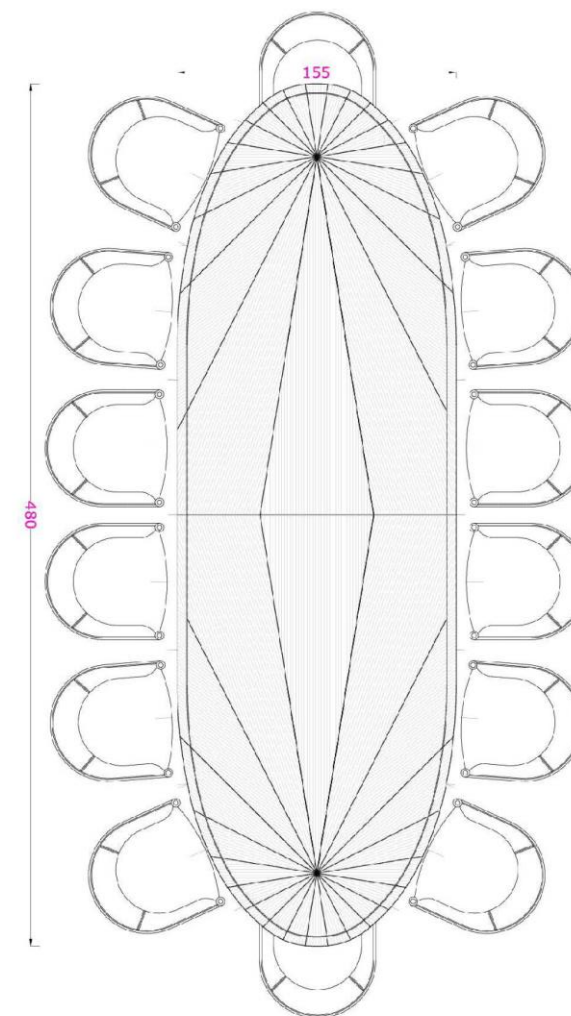
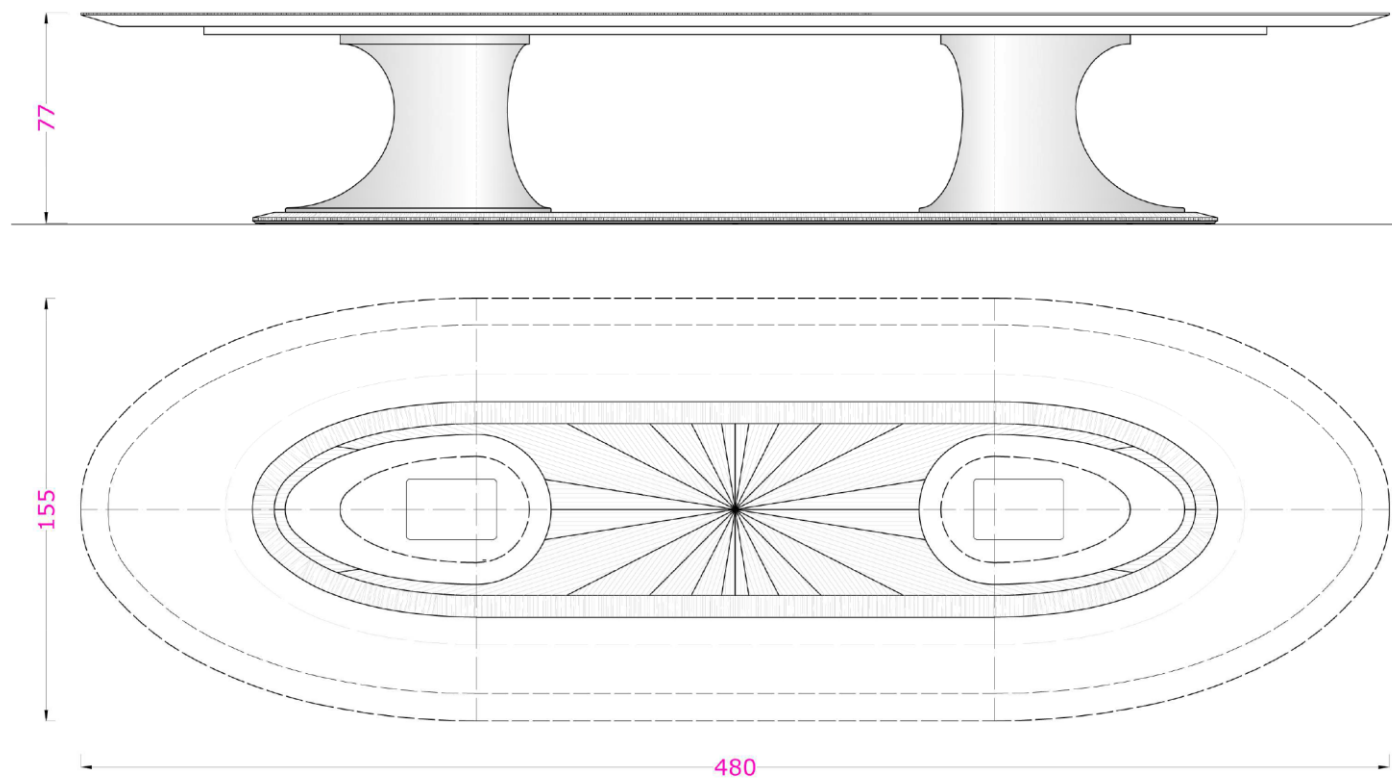


Art. 8679 – Mod. C

Version with twin pillar support.



Art. 8679 – Mod .C *Elliptical Makassar-decorated top and twin pillar support.*



Art. 8679 – Mod.C. *Twin pillar version. Gold metallic finish with star motif makassar ebony wood inlay on top and base.*

